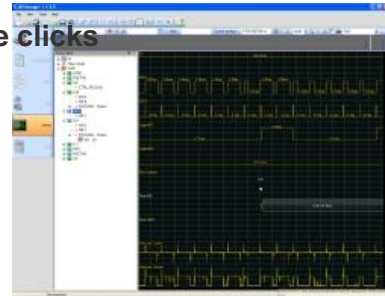


MPManager software

Access to the power of your Micropross device, with just mouse clicks

- ◆ Allows access to each functionalities of every devices of the MP300 range
- ◆ Intuitive and powerful user interface
- ◆ Possibility to define test scenarii without programming knowledge
- ◆



OVERVIEW :

The MPManager software main features are :

- Avoids programming task to drive the MP300 testers
- Covers the complete MP300 laboratory tools range
- Allows to perform physical and protocolary testing
- Opens each functionalities of the tester
- User friendly display of spy sessions

This piece of software will be the companion of all users of the MP300 tools who are intending to get the most out of their tool, without spending time to thoroughly read the user manual, or develop some custom code.

SPECIFICATIONS :

Contact products
Scripting possibilities
Electrical test condition definition
Logical test condition definition
Open short testing
Leakage current measurement
Voltage measurement
ATR reception
PPS exchange
ISO 7816 block level exchanges
USB 2.0 and -IC communication
SWP - S-HDLC - HCI command sending
Definition of testing sequences
Sending of perturbations
Shmoo testing

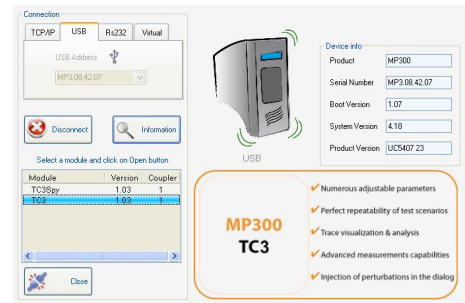
Viewer
Event display (on all contacts)
IO direction management
Time measurement through magnetic cursors
Interpretation of data blocks
Comparaison of spied trace with standard definitions
User defined trace analysis definition
Possible connections to the MP300: TCP/IP, USB 2.0, RS-232

Contactless products
Scripting possibilities
Physical environment definition
Logical environment definition
ISO/IEC 14443 command sending
ISO/IEC 15693 command sending
Mifare TM command sending
FeliCa TM command sending
NFC-IP1 coverage
Out of protocol block sending
Definition of test sequences
Resonance frequency measurement
Complex impedance measurement
Quality factor measurement
Shmoo testing
Smart card simulation configuration
Viewer
Event display (presence of carrier, sequences...)
I/O direction management
Time measurement through magnetic cursors
Interpretation of data blocks
Comparison of spied trace with standard definitions
User defined trace analysis definition
Possible connections to the MP300: TCP/IP, USB 2.0, RS-232

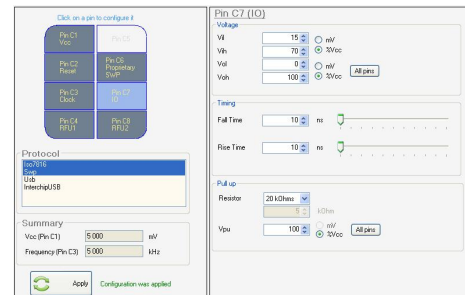
SOFTWARES :

The MPManager software is the user interface that is delivered with every member of the MP300 family. Its goal, is to allow the user to operate his Micropross tester in the best conditions possible, without spending time programming it.

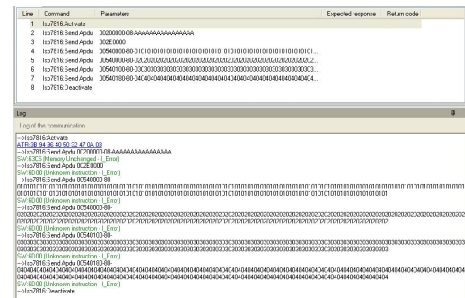
MPManager completely handles the communication link with the MP300 tester. Once the selection between TCP/IP, USB and RS-232 is made, the link between the PC and the MP300 is transparent to the user.



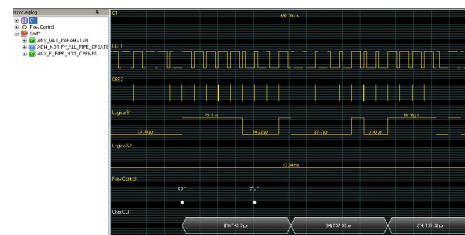
After connection to the tester, the user has the possibility to define the physical parameters that will be used during the test session. Voltages, frequencies, baudrates and many more parameters can be accessed.



Once this definition is done, the user can build his test scenarii. A catalogue of all supported commands is shown, and the user just needs to pick a few of those commands to build his test case.



MPManager also allows you to control the launching and stopping of the integrated spy. Just clicking a button, spy sessions can be initiated and stopped. Inside the viewer window, the user is presented in both text and graphical manners all exchanges that have been trapped.



MPManager also allows you to perform some electrical measurement tasks. Open/short, leakage current, consumption are all available just with mouse clicks.

Open/Short

Test parameters

C1 C5
 C2 C6
 C3 C7
 C4 C8

Select pin to test

Forced (µA)

Start test open/short

Result view

OK	OK
OK	OPEN
OK	OK
OPEN	OPEN

Leakage current measurement

Select pin State

Reset State	Vpp State
OFF	OFF
Clock State	IO State
OFF	OFF
RFU1 State	RFU2 State
OFF	OFF

Start leakage current measurement

Result view

ON	NONE
8.5 µA 0.9 µA	-0.9 µA 1.0 µA
2.1 µA 1.2 µA	0.2 µA -115.0 µA
4.0 µA 4.5 µA	1.0 µA -0.2 µA

Measure at High level : ...
 Measure at low level : ...